

# NEW AND IMPROVED DURAVENT – AN EVEN BETTER GAS FLUE SOLUTION.

Renowned for their high quality gas flue products for over 4 decades, Duravent have upgraded and improved their system to the next level, now providing an even better fit than ever.



WATCH  
THE VIDEO

We are sure you will appreciate the new products and benefits of the twin skin Duravent system providing the same high quality results you have come to expect from a brand that has delivered superior products for over 40 years.



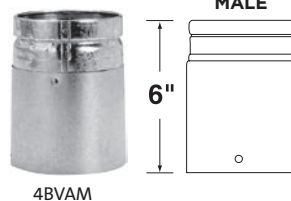
To assist installers to transition from the old to the new system Duravent are providing adaptors free of charge to make this a smooth and seamless process.

Your Abey Representative will be in contact with you to ensure you will have enough adapters at your store free of charge for this roll out.

- Used to adapt Current Models (GV) components to the New Model (BV) components
- Provided free of charge
- Available in 75mm – 200mm diameter sizes
- Limited Availability in 250 & 300mm sizes

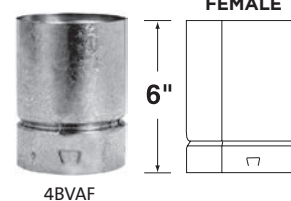
## Universal Male Adapter

MALE

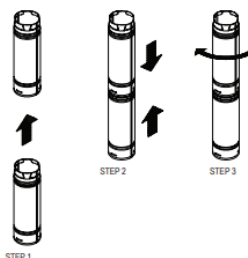


## Universal Female Adapter

FEMALE



## OVERVIEW OF PRODUCT DESIGN CHANGES



### JOINT ASSEMBLY OF CURRENT MODEL (GV) TO NEW MODEL (BV)

#### Current Model (GV)

- Align two parts
- Insert male end into female end
- Rotate female part clockwise to secure connection

#### New Model (BV)

- Insert male end into female end until you feel the components engage

### JOINT SEPARATION OF CURRENT MODEL (GV) TO NEW MODEL (BV)

#### Current Model (GV)

- Rotate female part counter-clockwise
- Separate b-vent components

#### New Model (BV)

- Align dimple and bump on male and female components
- Separate b-vent components

### ADDITIONAL FEATURES - DIAMETERS 75mm - 200mm



#### Current Model (GV)

- Fittings such as elbows and tees incorporate an extra gore which allows the fitting to rotate 360 degrees. This ensures the fitting can be pointed in the desired position during installation.



#### New Model (BV)

- Each joint will rotate 360 degrees.
- Fittings such as elbows and tees can be pointed in the desired position without a separate gore at the top or bottom.
- For added security, depress the DuraTab® at the base of the joint to prevent unwanted joint separation.

PRODUCT DESCRIPTION	CODE	
<b>DURAVENT TWIN SKIN GAS FLUEING</b> 75mm Dia. Dura Pipes	75 x 1500mm	2000BV
	75 x 900mm	2002BV
	75 x 300mm	2003BV
100mm Dia. Dura Pipes	100 x 1500mm	2007BV
	100 x 900mm	2009BV
	100 x 300mm	2010BV
125mm Dia. Dura Pipes	125 x 1500mm	2014BV
	125 x 900mm	2016BV
	125 x 300mm	2017BV
150mm Dia. Dura Pipes	150 x 1500mm	2021BV
	150 x 900mm	2023BV
	150 x 300mm	2024BV
200mm Dia. Dura Pipes	200 x 1500mm	2020BV
	200 x 900mm	2025BV
	200 x 300mm	3308BV
250mm Dia. Dura Pipes	250 x 900mm	2026BV
	250 x 450mm	3309BV
300mm Dia. Dura Pipes	300 x 900mm	3302BV
	300 x 450mm	3310BV
<b>DURAVENT TWIN SKIN GAS FLUEING</b> Dura Adjustable Pipes 	75mm	2028BV
	100mm	2029BV
	125mm	2030BV
	150mm	2031BV
	200mm	2032BV
<b>DURAVENT 90° ELBC</b> Dura 90° Elbows Adjustable 	90° x 75mm	2035BV
	90° x 100mm	2036BV
	90° x 125mm	2037BV
	90° x 150mm	2038BV
	90° x 200mm	2039BV
<b>DURAVENT 45° ELBOWS</b> Dura 45° Elbows Adjustable 	45° x 75mm	2042BV
	45° x 100mm	2043BV
	45° x 125mm	2044BV
	45° x 150mm	2045BV
	45° x 200mm	2046BV
	45° x 250mm	2047BV
	45° x 300mm	3305BV
<b>DURAVENT DIVERTOR CONNECTORS</b> Duravent Divertor Connectors 	75mm	2049
	100mm	2050
	125mm	2051
	150mm	2052
	200mm	2053
	250mm	2054
	300mm	3307

PRODUCT DESCRIPTION	CODE	
<b>DURAVENT GAS COWLS</b> Duravent Gas Cowls 	75mm	2056BV
	100mm	2057BV
	125mm	2058BV
	150mm	2059BV
	200mm	2063
	250mm	2064
	300mm	3306
<b>DURAVENT TEES</b> Duravent Tees 	75mm	2080BV
	100mm	2081BV
	125mm	2082BV
	150mm	2083BV
	200mm	2084BV
	250mm	2085BV
<b>DURAVENT TEE CAPS</b> Duravent Tee Caps 	300mm	3304BV
	75mm	3000
	100mm	3001
	125mm	3002
	150mm	3003
	200mm	3004
<b>DURAVENT INCREASERS</b> Duravent Increasers 	250mm	3005
	300mm	3007
	75 x 100mm	2090BV
	75 x 125mm	2091BV
	100 x 125mm	2093BV
	100 x 150mm	2094BV
	125 x 150mm	2095BV
	150 x 200mm	2096BV
	175 x 200mm	2097BV
	200 x 250mm	2098BV
<b>DURAVENT CEILING RINGS</b> Duravent Ceiling Rings 	250 x 300mm	3303BV
	100mm	2302
	125mm	2303
	150mm	2304
	200mm	2306
	225mm	2307
	250mm	2308
<b>DURAVENT FLASHING CLIPS</b> Duravent Flashing Clips 	300mm	2310
	75mm	2321
	100mm	2322
	250mm	2328
<b>DURAVENT SOLID BRICK ELBOWS</b> Solid Brick Elbows 	300mm	2329
	450mm	1983
	600mm	1983L

ABEY AUSTRALIA LTD | VIC 03 9747 7777 | NSW 02 8572 8572  
QLD 07 3805 7000 | WA 08 9446 8255 | SA 1800 809 143

**duravent**<sup>™</sup>

**Abey**<sup>AU</sup>  
THE TRADIES CHOICE

[abeytrade.com.au](http://abeytrade.com.au)